

How to Use Biotage® SNAP Ultra Cartridges on CombiFlash® Rf Systems

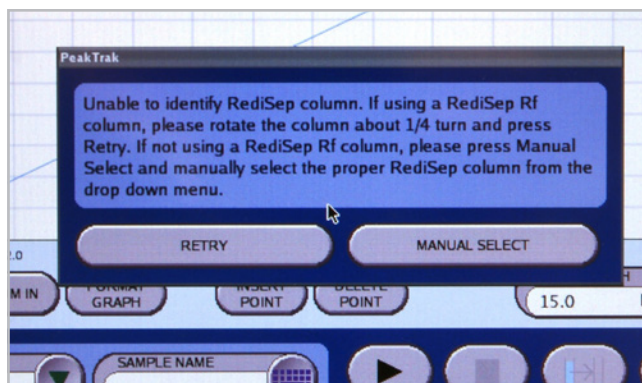
A Quick Guide

Biotage® SNAP Ultra cartridges are compatible with CombiFlash® Rf Systems. As a convenience, Biotage SNAP Ultra cartridges with Luer slip connectors are available. Contact your Biotage representative for ordering information.

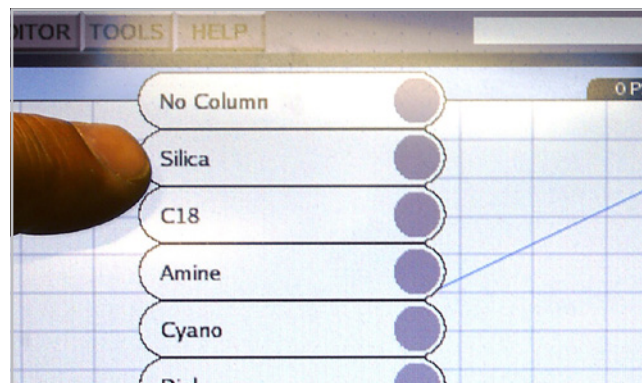


Programming Your Isco CombiFlash for Use with Biotage® SNAP Ultra

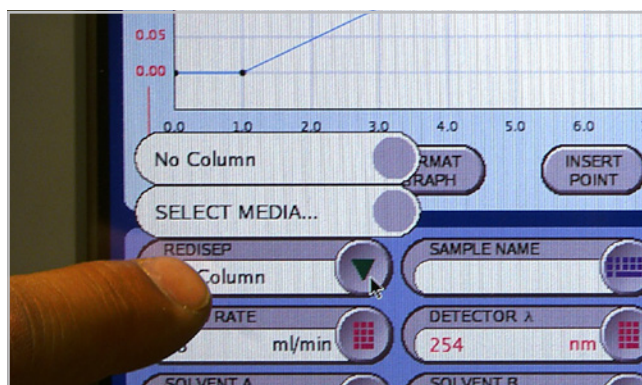
1. Install a Biotage SNAP Ultra cartridge on your CombiFlash system.
2. You may see the message, “Unable to identify RediSep® Rf column” This is normal, just press MANUAL SELECT.



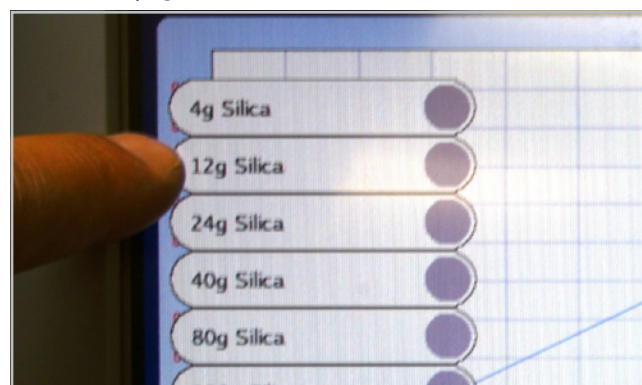
5. Touch Silica.



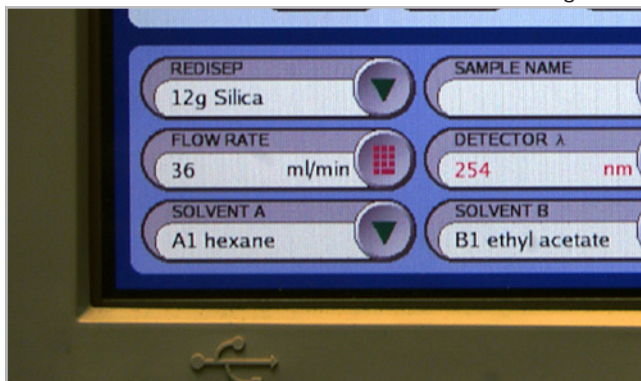
3. Touch MEDIA TYPE.
4. Touch SELECT MEDIA...



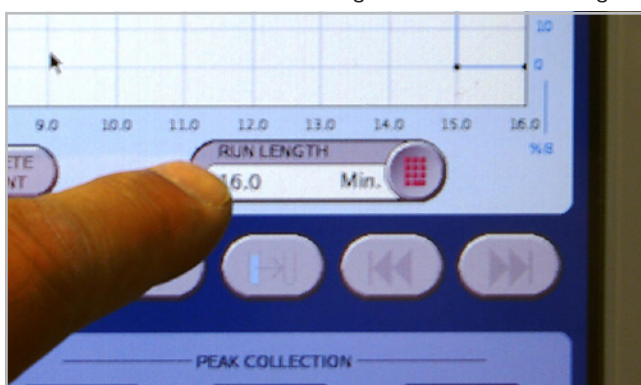
6. Touch the desired cartridge size. See Size Conversion Chart on the next page.



7. Touch FLOW RATE. Enter flow rate from chart on the right.



8. Touch RUN LENGTH. Enter run length from chart on the right.



9. Press 

Back Pressure

When a column is manually selected, CombiFlash® Rf instruments have a default back pressure limit of 50 psi.

The design of Biotage cartridges does not produce the back pressure commonly seen with typical flash chromatography cartridges.

The recommended flow rates (on the right) will result in low back-pressures well below 50 psi.

Please note that the designations, CombiFlash® Rf Systems, and RediSep® are trademarks for Teledyne Instruments, Inc. DBA Teledyne Isco, and are used only to identify for purposes of compatibility.

EUROPE

Main Office: +46 18 565900
Toll Free: +800 18 565710
Fax: +46 18 591922
Order Tel: +46 18 565710
Order Fax: +46 18 565705
order@biotage.com
Support Tel: +46 18 56 59 11
Support Fax: + 46 18 56 57 11
eu-1-pointsupport@biotage.com

NORTH & LATIN AMERICA

Main Office: +1 704 654 4900
Toll Free: +1 800 446 4752
Fax: +1 704 654 4917
Order Tel: +1 704 654 4900
Order Fax: +1 434 296 8217
ordermailbox@biotage.com
Support Tel: +1 800 446 4752
Outside US: +1 704 654 4900
us-1-pointsupport@biotage.com

JAPAN

Tel: +81 3 5627 3123
Fax: +81 3 5627 3121
jp_order@biotage.com
jp-1-pointsupport@biotage.com

CHINA

Tel: +86 21 2898 6655
Fax: +86 21 2898 6153
cn_order@biotage.com
cn-1-pointsupport@biotage.com

To locate a distributor,
please visit our website
www.biotage.com

Part Number: UI319

© 2014 Biotage. All rights reserved. No material may be reproduced or published without the written permission of Biotage. Information in this document is subject to change without notice and does not represent any commitment from Biotage. E&OE. A list of all trademarks owned by Biotage AB is available at www.biotage.com/legal. Other product and company names mentioned herein may be trademarks or registered trademarks and/or service marks of their respective owners, and are used only for explanation and to the owners' benefit, without intent to infringe.

Flow Rate and Time Chart

Biotage® SNAP Ultra	Flow Rate (mL/min)	Run Length (min)
1500 g	500	51.5
750 g	500	25.7
340 g	200	30.6
100 g	100	17.2
50 g	100	8.6
25 g	75	7.8
10 g	36	6.1

Choosing the Optimal Cartridge Size

Biotage® SNAP Ultra cartridges have 2–4 times greater loading capacity than typical flash chromatography cartridges. Generally, you choose a Biotage SNAP Ultra cartridge that is ½ the size you would typically use for purifications.

Column Size Typically Used	Biotage® SNAP Ultra
3000 g	1500 g
1500 g	750 g
750 g	340 g
330 g	100 g
220 g	100 g
120 g	50 g
80 g	50 g
40 g	25 g
24 g	10 g
12 g	10 g
5 g	10 g